

Plainview-Old Bethpage CSD K-8 Structural Review Committee Report Update

2015-16 School Start Times

March 2, 2013

Dr. Lorna R. Lewis

Superintendent

SRC Committee

PTA

- Jennifer Novis (K /PKY/MMS)**
- Kathy Rea(SEPTA/HS/ POBMS)
- Kim Luxenberg (SR/POBMS)
- Donna Lupia (MMS/OB)
- Paula Barsky (MMS/HS/SEPTA)
- Diane Collins (MMS/HS)
- *Shari Corn (PAS/POBMS)***

Central Office

- Jill Gierasch
 - Lorna Lewis
 - Nadine Eiring
-
- Attended first four meetings
 - ** K Center parents 2013-14

PCT*

- Judi Alexanderson
- Nina Melzer
- Morty Rosenfeld
- Ed Hanlon
- Vicki Ahlsen

ASDA

- Dolores Binstock
 - *Paulette Miller*
- Laurie Lynn
- Fran Leiboff/ *Karen Heitner*
- Alison Clark
- John McNamara
- D. Mittleman /*Chris Donarummo*
- Greg Scesney

Issues and Solutions

Challenge

- MMS has conflicts with music rehearsal and remedial on Tuesdays and fewer music rehearsals
- MMS students have to choose between clubs and athletics during period 10

Solution

- Create a period 10 schedule that mirrors zero period at POBMS
- Utilize period 10 at MMS to hold additional music rehearsals and eliminate the conflicts with remedial
- MMS delay the start of all sports until 3:45 p.m. to allow athletes the opportunity to participate in clubs

Cost/Concern

- Delaying the start of some music rehearsals 45 minutes after school may reduce participation
- All athletics will start 90 minutes after school day at MMS
- Utilize an aide for supervision

Eleven Proposals Considered

Proposal #1 Summary:

- As previously articulated in this power point as presented by the administration team to the Board of Education on September 30, 2013
- Mattlin MS would implement a 10th period that mirrored the Zero period at POBMS

Discussions:

- Implemented 2014-15 school year with a 3rd remedial day available to students as of November
- No additional cost for transportation; however, MMS athletes had a long day with this schedule as they had to wait around for the program to begin at 3:50 pm after having started their day at 8:00 am. POBMS starts their day at 8:43 am (Zero period starts at 7:52 am)
- The later day presented a conflict for students participating in religious obligations (Hebrew School and Confirmation) . Central Office met with local clergy to problem solve.
- An additional aide for approximately two hours per day came at a cost of \$10,925.
- Transportation: \$0 Staffing: \$10,925 Total: \$10,925

Proposal #11 Summary

- MS on same schedule with start time at 8:33 am (7:42 am zero period)
- K Center time shifts to later 9:35 am
- HS remains at the same time 7:28 am start

Considerations & Concerns

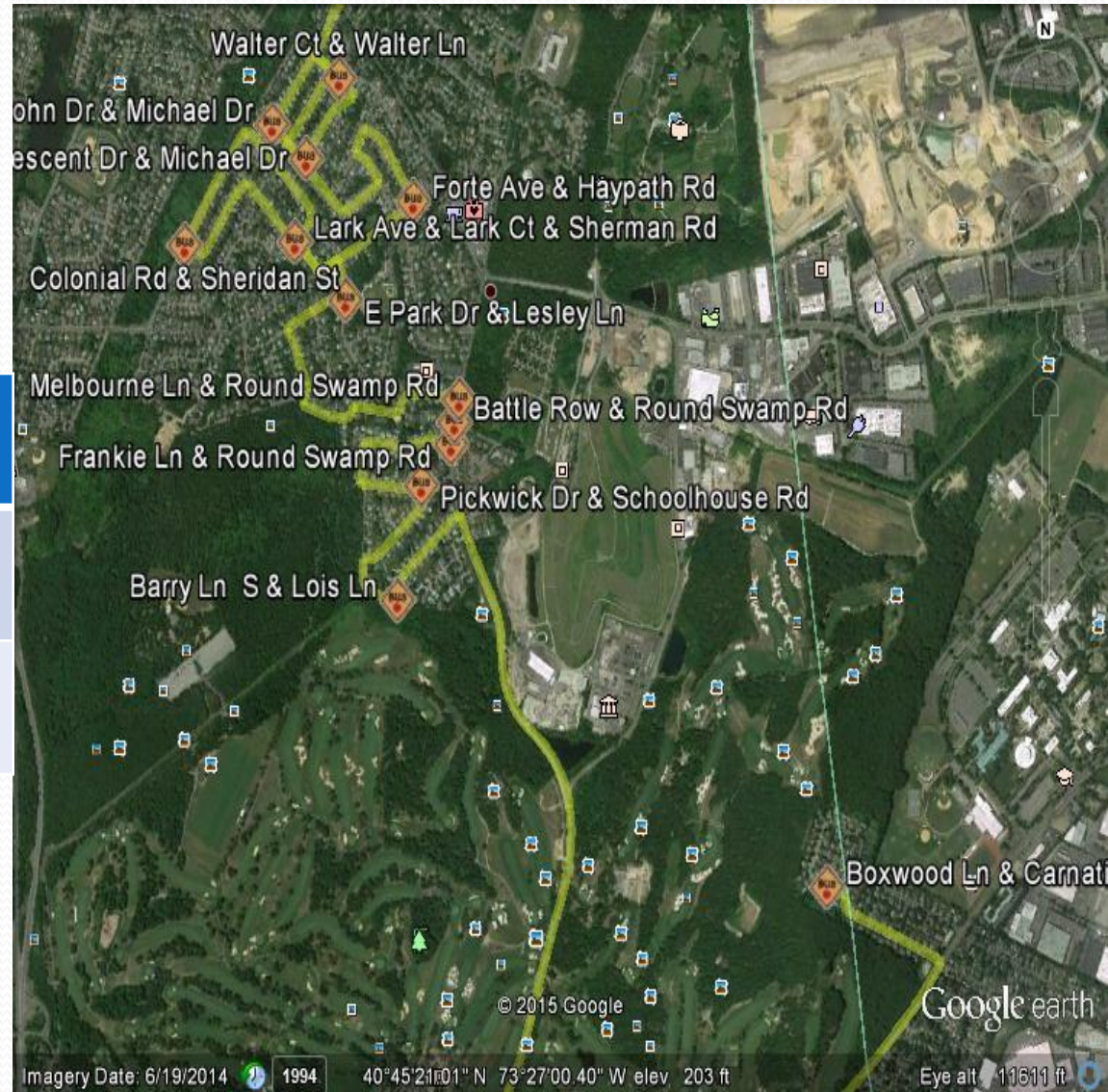
- MS time was well received by the entire SRC
- Conflicts with Religious schools , Music and Athletics eliminated
- K Center start was a concern that could be overcome with timely communication to parents

School	ZERO PERIOD	PERIODS 1-8	NINTH PERIOD	TENTH PERIOD
HIGH SCHOOL	N/A	7:28- 1:37	Period Ends 2:24 Bus Arrives 2:30	Period Ends 3:11 Bus Arrives 3:30
MIDDLE SCHOOL	Bus arrives 7:35 AM Zero Period begins 7:42 AM	8:33-2:43 Bus Arrives at 8:23 AM	Period Ends 3:28 Bus Arrives 3:35	N/A
ELEMENTARY		9:10-3:10		
K-CENTER		9:35- 3:35		

➤ Total Cost \$107,000

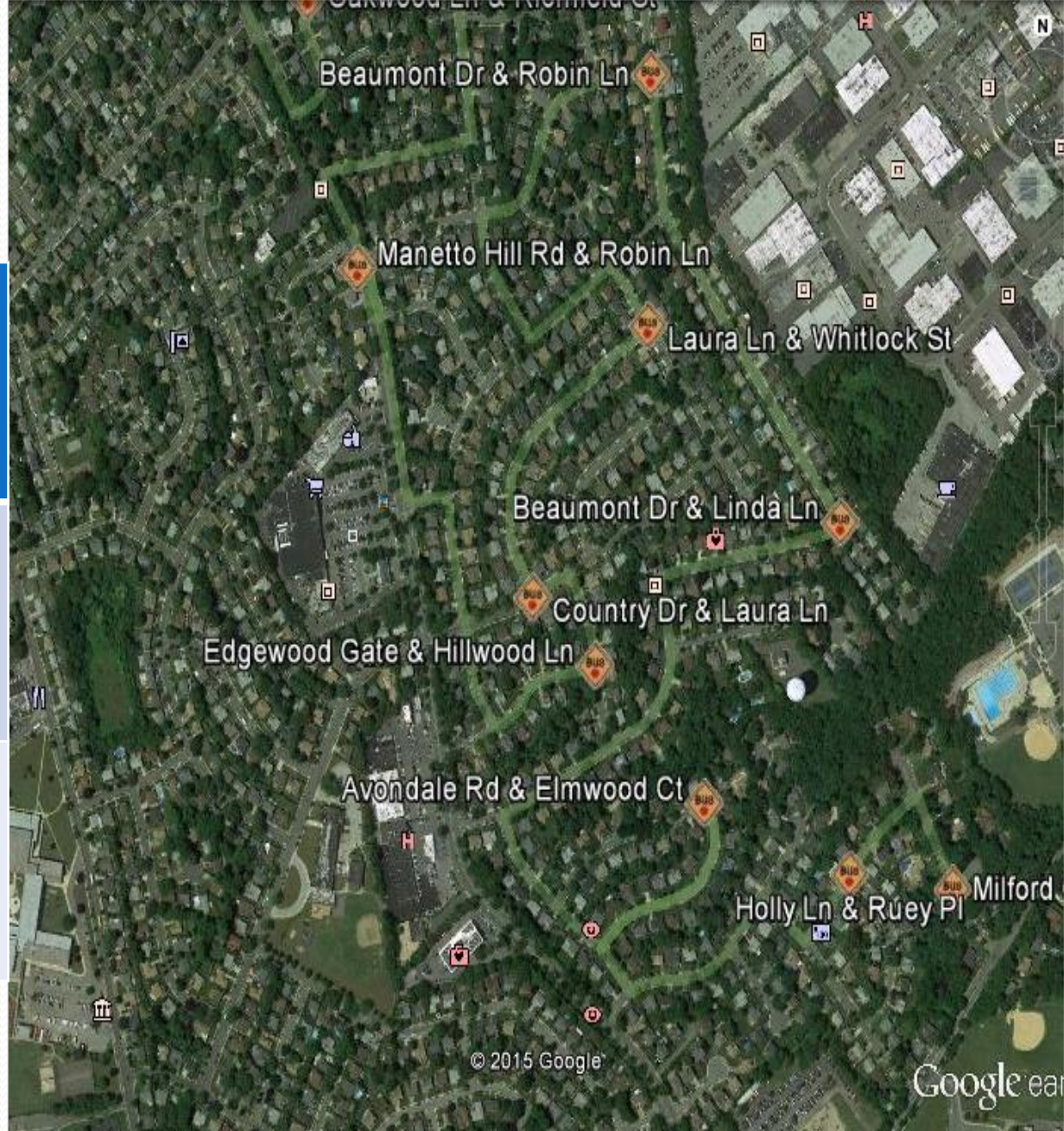
Farmingdale Old Bethpage Area

	Pick Up	Arrival Time	Length of Trip
K-Ctr	8:40	9:25	45 minutes
OB	8:31	9:00	29 minutes



PARKWAY AREA

	Pick Up	Arrival Time	Length of Trip
K Ctr	8:45	9:25	40 minutes
PK	8:35	9:00	25 minutes



Superintendent's Recommendation

- Consider implementing Proposal #11 for the 2015-16 School Year
 - 2015-16 budget should reflect the additional cost of \$107,000 to address transportation for this proposal
 - Provide timely notification of schedule to all schools
- Develop a plan for moving K into the elementary schools for the 2016-17 school year
 - Ready classrooms over the summer of 2016
 - Bond referendum has two classrooms to address increased enrollment, if needed (\$300,000 per classroom)
 - Monitor enrollment pattern for Pasadena and Parkway to make recommendations for additional classroom space

Start and End Times 2015-16

- **K Center Proposed : 9:35-3:35**
- **Middle Schools 8:33 - 2:43**
- **Elementary Schools 9:10- 3:10**

- **Oceanside K Center (9:30 -3:35) : The only other Kindergarten Center in Nassau County**
- **Bethpage Elementary – 2 schools 9:25 - 3:35**
- **Commack K-2 9:30- 3:30**
- **Syosset K-5- 9:15 - 3:15**
- **Hicksville- 3 schools 9:00- 3:30**

Waking Up With K-STEAM

- **Enrichment program through Child Care 8:15-9:15 am**
- **Following the 4 R model but offered all year for students in childcare**
 - **Art**
 - **Computers**
 - **Games**
 - **Science/Math**



Superintendent's Recommendation Contd.

- SRC committee should continue with a secondary focus to explore the implementation of a 9 period day grades 5-12
- Timeline for report to the Board of Education should be February 2016 for consideration in the 2016-17 school year